

Building connections that last™



Fire Protection Piping Products



BUILDING CONNECTIONS THAT LAST SINCE 1850

ANVIL COMBINES THE LATEST TECHNOLOGY, UP TO DATE FIRE PROTECTION RATINGS, RECOGNIZED MANUFACTURING EXPERTISE AND A TRUSTED HISTORY THAT HAS MADE ANVIL THE GO TO SOURCE FOR FIRE PROTECTION PIPING PRODUCTS.



THREADED IRON	02
GROOVED COUPLINGS	03
GROOVED FITTINGS/FLANGES	04
GASKET GUIDE	06
FLEXHEAD	07
PIPE HANGERS	10
SEISMIC HANGERS/BRACES	12
SEISBRACE SOFTWARE	13
PIPE NIPPLES/PLAIN END FITTINGS	14
OUTLETS/DROP NIPPLES	15
VALVES	16
NORTH ALABAMA PIPE	17
BRANDS OF ANVIL	18
CUSTOMER SERVICE/DISTRIBUTION	20

THREADED FITTINGS

Anvil International offers the most complete line of threaded iron products in the industry, offering domestic cast and malleable iron pipe fittings. SPF/Anvil brand provides high quality/high value, internationally sourced cast, malleable and ductile iron pipe fittings.



CAST IRON

- Branded with Anvil logo confirms manufactured in Columbia, PA USA
- Most complete line in the industry, available in ¼" - 12"
- ¼" - 4" UL Listed FM Approved at 400 PSI
- Class 125 and 250 Extra Heavy CI threaded fittings
- Threads NPT per ASME B1.20.1
- Air tested

MALLEABLE IRON

- Branded with the Anvil logo confirms manufactured in Columbia, PA USA
- Broadest line of fitting sizes available in both black or galvanized finishes, Class 150 and 300
- All Class 150 fittings are UL Listed and FM Approved at 300 PSI
- All Elbows and Tees ¾" and larger are 100% air tested at minimum of 100 PSI
- Air tested



CAST IRON

- Available in 1" - 2½"
- All SPF Cast Iron is UL Listed and FM Approved at 300 psi
- Class 125 Standard
- Air tested

MALLEABLE IRON

- Available in ½"- 6" both black or galvanized finishes, Class 150 and 300
- All SPF Malleable Iron is UL Listed and FM approved
- ½" - 2" Fittings are UL Listed and FM Approved at 500 PSI and 2½"- 6" Fittings and All Bushings are UL Listed and FM Approved at 300 PSI
- Air tested

DUCTILE IRON

- Available in 1" - 2½"
- All SPF Ductile Iron is UL Listed and FM Approved at 500 PSI
- Class 150 Standard DI threaded fittings



GROOVED COUPLINGS

Anvil International offers Gruvlok, domestic, and SPF/Anvil, internationally sourced, grooved couplings and fittings to meet any of your requirements. Gruvlok grooved products are manufactured at our state of the art facility in Columbia, PA USA. All grooved products for Fire Protection are UL/ULC Listed and FM Approved.



SLIDELOK RIGID READY FOR INSTALLATION COUPLING

- Slide action eases assembly and reduces installation time
- 1¼" - 8", Painted or Galvanized
- Manufactured in Columbia, PA USA
- Up to 450 PSI
- UL / FM Approved
- Wet, Dry or Freezer applications, Pre-Lubricated Grade "E" EPDM, 4Seal Gasket
- Can be used with Gruvlok or SPF/Anvil fittings



SLIDELOK 74FP



RIGID COUPLING

- 1¼" - 8", Painted or Galvanized
- 300 PSI
- UL / FM Approved
- Wet or Dry Systems
- Pre-Lubricated Grade "E" EPDM, Type A Gasket



FP7400



C-4



FLEXIBLE COUPLING

- 1¼" - 8", Painted or Galvanized
- 300 PSI
- UL / FM Approved
- Wet or Dry Systems
- Pre-Lubricated Grade "E" EPDM, Type A Gasket



FP7000



C-3



REDUCING COUPLING

- 1¼" - 8", Painted or Galvanized
- 300 PSI
- UL / FM Approved
- Wet or Dry Systems
- Pre-Lubricated Grade "E" EPDM, Type A Gasket



7010FP



RC-2

GROOVED FITTINGS/FLANGES

Anvil International offers domestic and globally sourced grooved couplings and fittings to meet your requirements. Gruvlok grooved products are manufactured at our state of the art facility in Columbia, PA USA. All grooved products for Fire Protection are UL/ULC Listed and FM Approved.



STANDARD PATTERN ELBOWS AND TEES

- Designed to provide minimal pressure drop and uniform strength
- 300 PSI rating
- UL / FM Approved
- Standard Pattern Fittings
- Reducing, Cross, 45 and 22½ available
- Painted or Galvanized Finishes



7050 AND 7060



E-1 AND T-1



SHORT PATTERN ELBOWS AND TEES

- 2" - 8", 300 PSI Rating
- UL / FM Approved
- Short Pattern Fitting System
- CAD design increases internal diameters and provides superior flow capabilities
- Painted or Galvanized Finishes



FP7450 AND FP7460



SE-1 AND ST-1



GROOVED END CAPS

- 1" - 12", 500 PSI Rating
- Used with all of Anvil's grooved offerings; Gruvlok, SlideLok and SPF Couplings
- UL / FM Approved



7074*



SK-1



DRAIN ELBOW

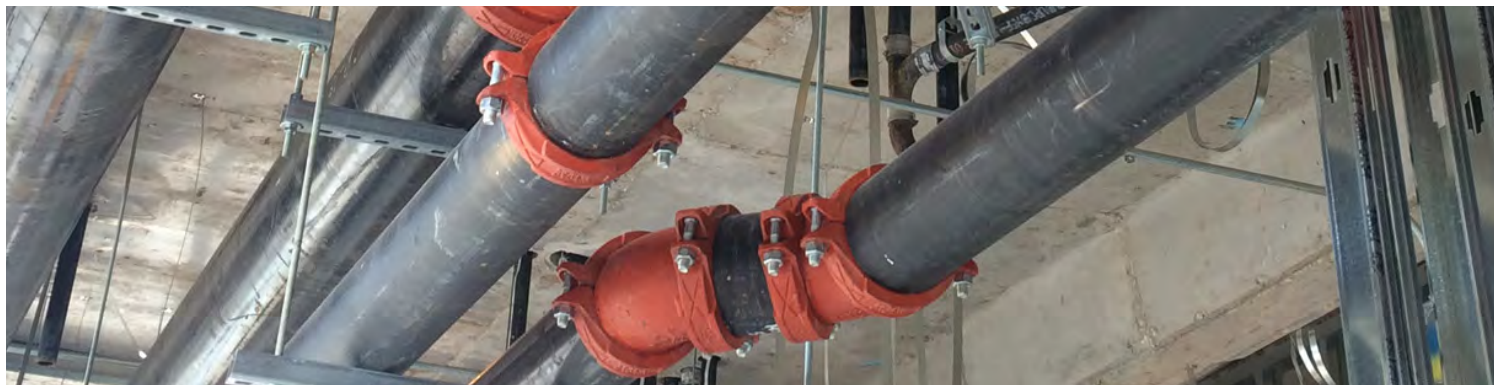
- 1¼" - 8", Painted or Galvanized
- 300 PSI
- UL / FM Approved
- Wet or Dry Systems
- Pre-Lubricated Grade "E" EPDM, Type A Gasket



7050DR



E-9



END OF THE LINE ELBOW

- Transition from grooved to female thread is required
- Allow for convenient connection of drains, vents, pressure gauges as well as direct connection of an end of line sprinkler head
- 300 PSI
- UL / FM Approved



SE-5



MECHANICAL TEES

- Quick and easy outlet installation at any location along the pipe without welding
- 7045 and 7046, 500 PSI UL/FM
- MT-1 and MT-2, 300 PSI UL/FM
- Branch or Cross connection



7045 CLAMP-T, FPT BRANCH AND
7046FP CLAMP-T, GROOVED BRANCH



MT-1, THREADED FPT BRANCH AND
MT-2, GROOVED BRANCH



THREADED BRANCH TEE

- Steel electro-plated u-bolt to save space and allow easy installation in confined places
- Ideal for direct connection to sprinkler heads
- Available 1 1/4" x 1/2" - 2 1/2" x 1"
- 300 PSI
- UL / FM Approved



MT-30



GROOVED FLANGE ADAPTER

- Allows direct connection of class 125 or class 150 flange
- 2" - 12", Painted or galvanized
- UL Listed and FM Approved
- 300 PSI
- Steel adapter insert available



7012*



F-3

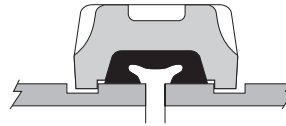
GASKET GUIDE



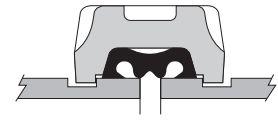
Anvil International offers a variety of pressure responsive gasket styles. Each serves a specific function while utilizing the same basic sealing concept.

1. "C" STYLE

The "C" Style cross section configuration is the most widely used gasket. It is the gasket style provided as standard in many Gruvlok Couplings. Grade "E" is the standard for fire protection gaskets.



1 "C" STYLE



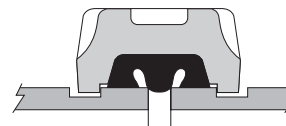
2 FLUSH GAP®

2. FLUSH GAP®

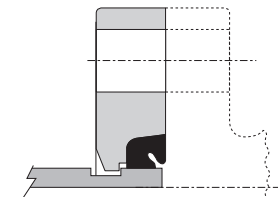
Designed to prohibit contaminants from building up in the gasket cavity. The centering rib fits flush over the gap between the two pipe ends thus closing off the gasket cavity. = for use in dry fire protection systems.

3. SLIDELOK™ PRESSURE RESPONSIVE

SlideLOK gasket patent pending design easily slides over the grooved pipe end for quick installation. The gasket design provides a 360° consistent compression seal when fully installed. The internal ribs are design to prohibit contaminants from building in the gasket cavity by engaging individually with each pipe end. Performance of the gasket is equivalent to the Gruvlok Flush Gap Gasket.



3 SLIDELOK™ PRESSURE RESPONSIVE



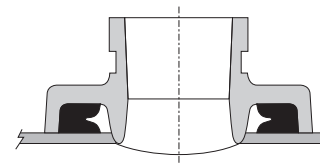
4 FLANGE

4. FLANGE

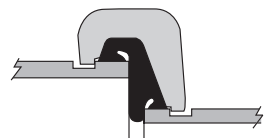
A specially designed gasket for the Fig. 7012 and 7013 Flange provides for a reliable seal on both the pipe and the mating flange.

5. CLAMP-T®

These gaskets conform to the curved exterior of the pipe to provide a pressure responsive seal. This unique design is only used with Fig. 7045, 7046 Clamp-T and Fig. 7047, 7048, and 7049 Clamp-T Crosses.



5 CLAMP-T®



6 REDUCING COUPLING

6. REDUCING COUPLING

The centering rib allows for pipe positioning and serves to keep the smaller pipe from telescoping during installation. Used only with the Fig. 7010 Reducing Coupling.

FIRE PROTECTION GASKET GRADE INDEX

GRADE	TEMPERATURE RANGE	COMPOUND	COLOR CODE	GENERAL SERVICE APPLICATION
E (TYPE A)	-40°F to +150°F (-40°C to 66°C)	Pre-Lubricated	Violet	Wet & Dry (oil free air) Pipe in Fire Protection Systems. For dry pipe systems, Gruvlok Xtreme™ Temperature Lubricant is required.
E	-40°F to +230°F (-40°C to 110°C)	EPDM	Green	Water, dilute acids, alkalis, salts, and many chemical services not involving hydrocarbons, oils, or gases. Excellent oxidation resistance. NOT FOR USE WITH HYDROCARBONS
L	-40°F to +350°F (-40°C to +177°C)	Silicone	Red	Recommended for dry, hot air and some high temperature chemical services. "C" Style only

FLEXIBLE FIRE SPRINKLER CONNECTIONS

We invented the concept of Flexible Fire Protection™. All our flexible sprinkler pipe and connections are UL Listed and/or FM Approved.

FLEXHEAD® TRUST THE ORIGINAL™

THE ONLY PRODUCT THAT:

- Has undergone full-scale head deployment testing
- Is seismically qualified for use in Seismic Design Categories D, E & F
- Is made of 100% 304 stainless steel including end fittings
- Is fully welded without the need for o-rings or gaskets



FLEXHEAD® FLEXIBLE FIRE SPRINKLER CONNECTIONS

- UL Listed/ FM Approved
- Undergone full-scale head deployment testing
- Is seismically qualified for use in Seismic Design Categories C, D, E & F
- Is made of 100% 304 stainless steel including end fittings
- Every FlexHead hose is leak tested before shipment
- Is fully welded without the need for O-rings or gaskets



SUPERFLEX® FLEXIBLE FIRE SPRINKLER CONNECTIONS

- UL listed for tight 2-inch bend radius
- Increased bends create more flexibility during installation
- No need to measure or count the number of bends, 6' SuperFlex hose is UL listed for up to (12) bends
- Quick inspections and sign offs by AHJ's for final walkthrough
- UL Listed / FM Approved
- Available with MPT (Multi-positional tail) mounting bracket. No need to touch the ceiling tile during installation.



INSTITUTIONAL FLEXIBLE FIRE SPRINKLER CONNECTIONS

- Available in hose lengths from 2-6 feet
- Designed to be installed in concrete walls or ceiling penetrations
- Available with open hub UHO-3 bracket for easier installation
- Easy installation in tight spaces



SUPERFLEX® FLEXIBLE FIRE SPRINKER CONNECTION WITH PATENTED SLT TECHNOLOGY

- Fast and easy installation with 1" SlideLOK® Coupling
- UL listed for 2" bend radius, up to 12 bends per hose*
- Eliminates taping or doping of threaded fittings
- Flexible design provides versatility for changes in plan
- Installs on standard 1" Groove-O-Let



FLEXIBLE FIRE SPRINKLER CONNECTIONS

FLEXHEAD®

FlexHead systems connect sprinkler heads to sub-mains at least four times faster than hard pipe. Delivers even greater savings in retrofits. All our flexible sprinkler pipe and connections are UL Listed and/or FM Approved.

TRUST THE ORIGINAL™



1.25" I.D. HOSE WITH BEST FLOW CHARACTERISTICS

- Best flow characteristics for flexible drops in the industry
- 1¼ NPT Standard, 1¼ Cut Groove option available
- Great for tenant improvement projects, similar flow characteristic to 1" pipe
- FM Approved



FLEXIBLE FIRE SPRINKLER DRY PENDENT SYSTEM

- Suitable for **wet sprinkler systems with a dry pendent sprinkler head**
- Mounts on the top of freezer or sidewall
- Moves and flexes along with the structure protecting the integrity of the freezer seal
- Now available with a Drain Tee
- FM Approved



NO TOUCH CEILING TILE TALL BRACKET MOUNTING SYSTEM (MPT24BKT1)

- Superior height allows the "MPT" to be mounted without pre-installing the ceiling tile and comes out of the box fully assembled at 24"
- Within seconds the MPT Bracket can be adjusted from 24" to 16" to 14 ½" in length accommodating numerous applications without additional fabrication
- Adjustable Open Hub allows for swift & accurate repositioning at the 1/4 points
- UL Listed / FM Approved



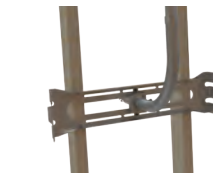
ARMSTRONG® TECHZONE™ BRACKET MOUNTING SYSTEM

- The mounting bracket is specifically designed to be compatible with the Armstrong® TechZone™ suspended ceiling systems
- FlexHead TechZone™ mounting bracelets allow for quick TechZone™ ceiling installations. The FlexHead TechZone™ system installs in a quarter of the time compared to typical black pipe armovers.
- Allows for rapid installation or relocation of sprinkler heads in suspended ceilings
- UL Listed / FM Approved



UHO-3 THREADED ROD INSTALLATION

- "Open Hub" design for quick and easy installation
- Can be installed with ¾" or ½" threaded rod attachments
- The ¾" rod is FM approved to be installed up to 4ft off the structure and the ½" threaded rod up to 6ft off the structure
- Good option for temporary fire protection
- Ideal for shell applications; easily transitions from UHO-3 to suspended ceiling bracket
- FM Approved



DRY WALL CEILING AND SIDEWALL INSTALLATION (ADO16BKT3 & ADO24BKT3)

- FlexHead ADO16BKT3 and ADO24BKT3 can be installed in hard ceilings or sidewall applications.
- For use with FlexHead hose model numbers 20XX, 20XXH, where XX designates hose length in inches.
- FM Approved

FLEXIBLE FIRE SPRINKLER CONNECTIONS

FLEXHEAD®

We invented the concept of Flexible Fire Protection™. All our flexible sprinkler pipe and connections are UL Listed and/or FM Approved.

TRUST THE ORIGINAL™



DROP NIPPLE FLEXIBLE SPRINKLER CONNECTIONS FOR ANVIL-STRUT™

- Attach to structure with Anvil-Strut™ and pipe clamp
- Drop nipple with reducer (not included)
- Perfect for applications where you have a concrete deck above the ceiling which secures the flexible hose to the building structure.
- This model will have a 1 inch female outlet
- FM Approved



LOW-PROFILE FLEXIBLE FIRE SPRINKLER CONNECTIONS FOR ANVIL-STRUT™

- Perfect for applications where you have limited space
- The FlexHead Low-Profile Model uses traditional Anvil-Strut™ Channel (not included) to secure the FlexHead sprinkler hose to the building structure
- FM Approved



INDUSTRIAL/DUCT FLEXIBLE FIRE SPRINKLERS CONNECTIONS

- FlexHead flexible sprinkler systems have been protecting exhaust ducts in semi-conductor/electronics facilities for more than thirty years
- Quick installation, install in minutes
- No need for inspection port
- Available in Steel, FRP, Polypropylene, and PVC
- Flexible hoses allow for independent motion (sway) between duct and water main to compensate for duct vibration and during possible seismic activity—eliminating potential leaks.
- Allows for quick and easy inspection of sprinkler heads
- FM Approved



CLASS 100 CLEANROOM FLEXIBLE FIRE SPRINKLER CONNECTIONS

- Custom manufactured for “walkable” cleanroom ceiling systems in Class 100 cleanrooms.
- 100% stainless-steel, one-piece system is leak-tested prior to shipping
- Allows quick and easy relocation when floor plan changes due to reconfiguration of tool layout
- Allows for independent motion (sway) between ceiling grid and water main to accommodate filter vibration and during possible seismic activity.
- Eliminates potential leaks and protecting gel seals
- Eliminates ceiling stress/leaks due to miss-aligned hard-pipe installation
- FM Approved

Whether your application is commercial, industrial, clean room, or institutional, FlexHead® flexible sprinkler systems can save you time and money by offering reliable, highly efficient, seismically qualified, and environmentally responsible products

PIPE HANGERS

Anvil International's manufacturing facility in Henderson, Tennessee has over 175,000 square feet dedicated to producing a complete line of pipe hangers and supports for all fire protection applications. These include clamps, braces, inserts, rods, slices and guides to exacting standards and certified ISO 9001 quality.



STEEL PIPE HANGER RINGS AND CLAMPS



69 (AF 300*)
ADJUSTABLE SWIVEL RING
SIZE RANGE: ½" - 8"



260 (AF 371*)
ADJUSTABLE CLEVIS HANGER
SIZE RANGE: ½" - 30"



65
LIGHT DUTY ADJUSTABLE CLEVIS
SIZE RANGE: ½" - 4"



261 (AF 400*)
RISER CLAMP
SIZE RANGE: ¾" - 24"



BEAM CLAMPS



92 (AF 100*)
C-TYPE STANDARD THROAT
SIZE RANGE: ¾" - ½"



93 (AF 103*)
C-TYPE WIDE THROAT
SIZE RANGE: ¾" - ½"



94
WIDE THROAT TOP BEAM
SIZE RANGE: ¾" - ¾"



AF090
RESTRAINING STRAP
SIZE RANGE: ¾" - ½"



AF090R
RETROFIT RESTRAINING STRAP
SIZE RANGE: ¾" - ½"



133
STANDARD DUTY BEAM CLAMP
SIZE RANGE: 4" - 12"



134
HEAVY DUTY BEAM CLAMP
SIZE RANGE: 4" - 12"



218
MALLEABLE BEAM CLAMP





CPVC PIPE HANGERS



184 (AF 515*)
DOUBLE OFFSET
HANGER AND
RESTRAINER
SIZE RANGE: ¾" - 2"



185 (AF 513*)
ONE HOLE
PIPE STRAP
SIZE RANGE: ¾" - 2"



186 (AF 510*)
TWO HOLE
PIPE STRAP
SIZE RANGE: ¾" - 3"



187 (AF 511*)
TWO HOLE 90°
SIDE MOUNT STRAP
SIZE RANGE: ¾" - 2"



188
TWO HOLE
STAND-OFF
HANGER
SIZE RANGE: ¾" - 2"



188R (AF 514*)
TWO HOLE
STAND-OFF
HANGER AND
RESTRAINER
SIZE RANGE: ¾" - 2"



PIPE SUPPORTS



192
ADJUSTABLE
PIPE SADDLE
SIZE RANGE: 2" - 12"



137/137S
STANDARD
U-BOLTS
SIZE RANGE: ½" - 36"



264 (AF 707*)
ADJUSTABLE
PIPE SADDLE
SIZE RANGE: 2½" - 36"

BRACKETS AND CEILING PLATE



206 (AF 556, 560, 565*)
STEEL SIDE
BEAM BRACKET
SIZE RANGE: ¾" - ¾"



207 (AF 553, 555*)
THREADED STEEL
SIDE BEAM BRACKET
SIZE RANGE: ¾" - ½"



194 (AF 770*)
STEEL
BRACKET



610
CARBON STEEL
CEILING PLATE
SIZE RANGE: ¾"



550
REVOLVER SWIVEL
BRACKET
SIZE RANGE: ¾"



551
REVOLVER
BRACKET
SIZE RANGE: ¾"



*FORMERLY AFCON PRODUCT

SEISMIC BRACES

LEADING INNOVATION WITH THE BROADEST SEISMIC BRACING & HANGER SOLUTION



AF086
ADJUSTABLE
STRUCTURAL
BRACE
ATTACHMENT



AF087
STRUCTURAL
BRACE
ATTACHMENT



AF772
ADJUSTABLE
STEEL BEAM
ATTACHMENT



AF778
UNIVERSAL
STRUCTURAL
BRACE
ATTACHMENT



AF075
SWAY BRACE
SWIVEL
ATTACHMENT



AF076
UNIVERSAL SWIVEL
SWAY BRACE
ATTACHMENT



AF771
SWAY BRACE
SWIVEL
ATTACHMENT



AF775
STRUCTURAL BRACE
ATTACHMENT



AF777
SWIVEL
ATTACHMENT



AF001
MODEL Q SWAY
BRACE CLAMP



AF035
MODEL K SWAY
BRACE CLAMP



AF411
LONGITUDINAL
SWAY BRACE
FITTING



AF074
SWAY BRACE
ATTACHMENT
FITTING



AF310
SURGE RESTRAINER



AF773
SURGE
RESTRAINER

SEISBRACE® SOFTWARE

DESIGN SMARTER WITH ANVIL'S
SEISBRACE® DESIGN TOOL



SEISMIC PROTECTION FOR YOUR FIRE SPRINKLER SYSTEM

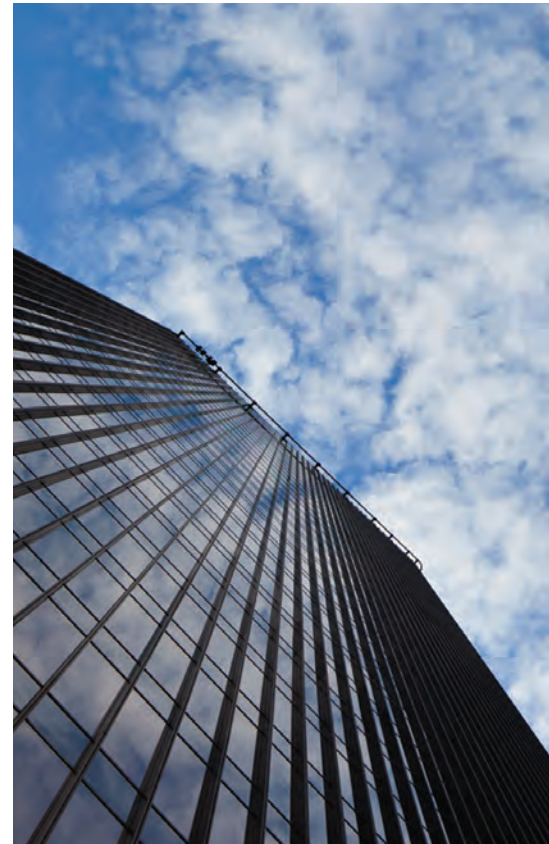
Experience has shown that most damage after an earthquake comes from the failure of the non-structural systems in a building not the failure of the structure itself. The Federal Emergency Management Agency (FEMA) has identified one of the primary causes of property damage from earthquakes as the failure of electrical, gas and water lines contributing to fires after an earthquake. NFPA 13 requires that fire sprinkler systems be braced to resist seismic forces, so that these critical systems will be operational for the protection of lives and property after a seismic event.

Anvil can help your fire sprinkler system to comply with the requirements of NFPA 13 (2016). The new and improved web based SeisBrace™ software will assist a fire sprinkler system designer to calculate a seismic coefficient for a project, perform zone of influence calculations, and select the most cost efficient and compliant seismic bracing products. The SeisBrace program creates a submittal with all calculations shown, a summary of the structural and system attachments and full submittal sheets for all bracing components.

FEATURES

- Designed to calculate the zone of influence for a given sway brace location.
- Intuitive and self-correcting to assure proper design of brace assemblies
- Generates full submittal package with calculations, details and product data pages
- Allows application of ASCE 7, per NFPA 13, for the most efficient brace layout
- Free with online registration
- Specify FM or UL Listed Components

WWW.SEISBRACE.COM



OUTLETS/DROP NIPPLES



TEE-LETS

Designed and manufactured to reduce the amount of weld required for Tee-Let installation on thin wall and proprietary flow pipe

ADJUSTABLE DROP NIPPLES

Provide the user with the ability to adjust fire sprinkler assemblies to fit flush to the finished ceiling without having to cut a drop nipple or drain the system



THREADED/GROOVED OUTLETS

Contoured to provide a precise fit at the opening in the run pipe and conform to standard practice MSS SP-97. These outlets are available in sizes 1/2" - 2" for 1 1/4" - 8" run sizes

ADJUSTABLE DROP NIPPLES

For use in the fire sprinkler systems installed in accordance with the requirements of NFPA Bulletin 13. They are rated for 300 PSI operation in fire sprinkler systems, and higher pressures in other non-critical piping systems

VALVES

COMPACT, COST-EFFECTIVE VALVES

Designed for use in grooved-end pipe fire protection systems and related equipment.



FIG. AN7722-3A
GROOVED BUTTERFLY VALVE

- 2" - 10", 300 PSI rating
- Valve features double-seal disc design
- Resilient EPDM coating
- Stems 416 stainless steel
- Supervisory service and auxiliary switches reated for 0.5 amp at 125 VDC, 0.25 amp at 250 VDC, and 4 amps at 125 VAC
- UL / FM Approved



FIG. 78FP
GROOVED CHECK VALVE

- 2" - 12", 300 PSI rating
- Quick, non-slam closure
- Leak free seal
- UL / FM Approved



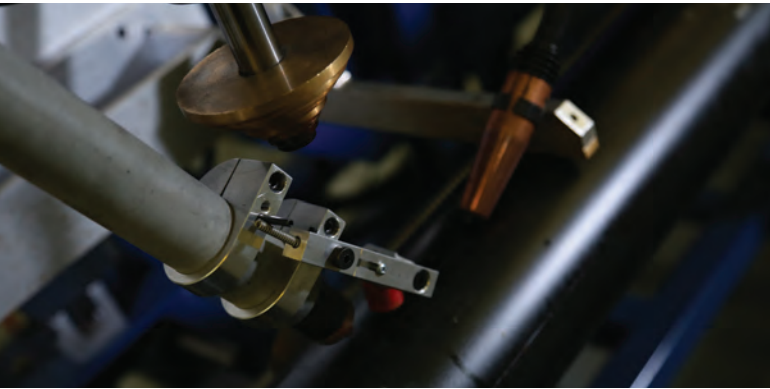
VALVES & INDICATOR POSTS
GROOVED CHECK VALVE

- Available in Non-Rising Stem and O.S.&Y. Rising Stem Resilient Wedge Gate Valves, and Swing-Type Check Valves
- Ideal for system control valves, as well as flanged fire pump applications
- Underground and wall Indicator Posts
- Indicator Post provides a means to operate a buried or otherwise inaccessible valve
- Indicator Post clearly indicates valve open or shut



NORTH ALABAMA PIPE (NAP)

Founded in 1983, NAP is a manufacturer of fabrication equipment, including automatic welders, plasma cut-off equipment, hole cutting equipment, make-on machines and pipe threaders. NAP, innovators of pipe fabrication equipment.



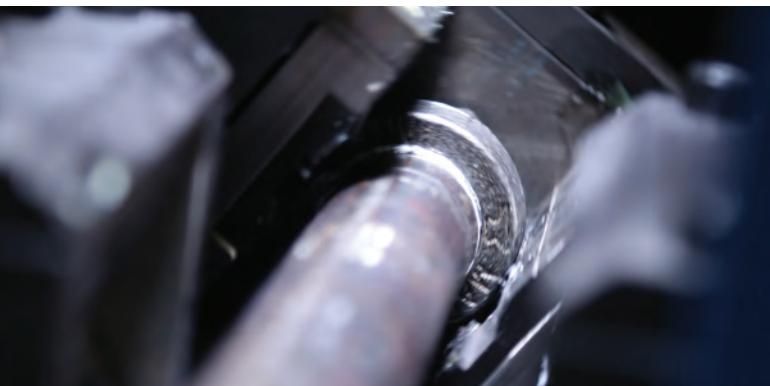
WELDERS

- Universal Welder, Line Welder, Manual Station Welder and Plasma cutting hole system
- Cycle time to cut hole and weld outlet onto pipe is approximately 32 seconds for 1/2" outlets and 55 seconds for 2 1/2" outlets
- Programmable system to weld Merit outlets and be programmed for other outlets
- Cutting



CUTTING

- Quick Cut Machine Designed to cut 2"- 8" pipe sizes and up to 25' long using complete air plasma system
- Big Cut Machine Designed to cut 2"- 16" pipe sizes and up to 25' long using complete air plasma system
- Thread Line



THREAD LINE

- Make On Machine makes on 1"- 2" fittings with no operator adjustments with a switch control to easily change between cast, ductile and malleable fittings
- Small Cut Machine designed as a complete cutting system for 1/2"- 2" pipe utilizing a cold saw

“ THE UNMATCHED RANGE OF DOMESTIC AND GLOBALLY SOURCED PRODUCTS FOR FIRE PROTECTION PIPING SYSTEMS OFFERED BY ANVIL INTERNATIONAL PROVIDES VERSATILE AND DEPENDABLE PERFORMANCE FOR WIDE RANGE OF APPLICATIONS. ”

About ASC Engineered Solutions

ASC Engineered Solutions is defined by quality—in its products, services and support. With more than 1,400 employees, the company’s portfolio of precision-engineered piping support, valves and connections provides products to more than 4,000 customers across industries, such as mechanical, industrial, fire protection, oil and gas, and commercial and residential construction. Its portfolio of leading brands includes ABZ Valve®, AFCON®, Anvil®, Anvil EPS, Anvil Services, Basic-PSA, Beck®, Catawissa, Cooplet®, FlexHead®, FPPI®, Gruvlok®, J.B. Smith, Merit®, North Alabama Pipe, Quadrant®, SCI®, Sharpe®, SlideLOK®, SPF® and SprinkFLEX®. With headquarters in Commerce, CA, and Exeter, NH, ASC also has ISO 9001:2015 certified production facilities in PA, TN, IL, TX, AL, LA, KS, and RI.



asc-es.com

Building connections that last™

